



Special edition

“Building and Construction sector”

CALL FOR APPLICATIONS

This competition is targeting companies or members of the private sector, local authorities, national agencies, public universities and NGOs, who have implemented an adaptation action.

*It concerns the regions included within the **Mediterranean bioclimatic zone, i.e. part or all of the following countries:** Albania, Algeria, Bosnia-Herzegovina, Croatia, Cyprus, Egypt, France, Greece, Israel, Italy, Jordan, Lebanon, Libya, Macedonia, Malta, Montenegro, Morocco, Palestinian National Authority, Portugal, Slovenia, Spain, Syria, Tunisia, Turkey.*

Initiated
by



Awards
partners

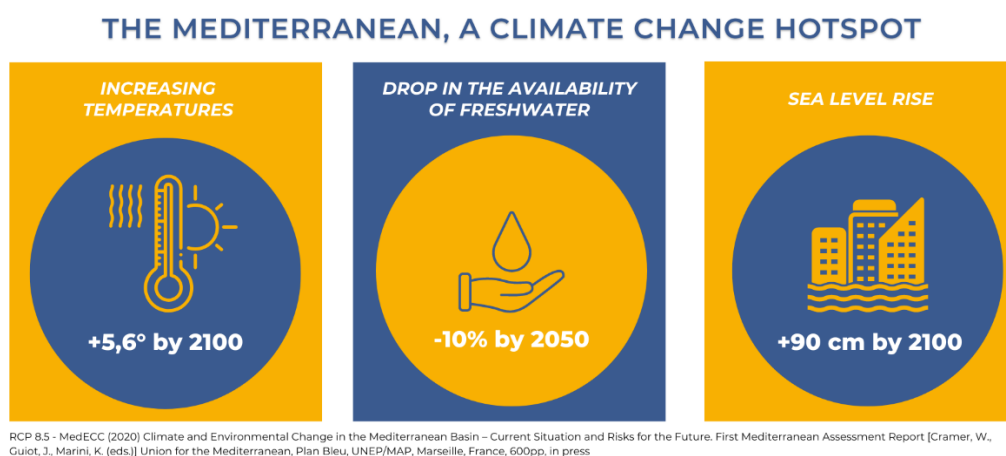


RESALLIANCE

The Mediterranean basin is a climate change “hot spot”. The latest scientific publications¹, show the trends observed over the past five decades are likely to continue which will mean, by the end of the century:

- ✓ a temperature increase of 5.6 ° C
- ✓ a 20% decrease in rainfall
- ✓ a possible sea level rise of almost 90 cm

These changes in the climate, which are happening faster than elsewhere, will have widespread serious consequences in human and socio-economic terms, including depleted water resources, accelerated desertification, increased mortality due to heat waves, and greater coastal risks.



The dual phenomena of coastal densification and urbanisation amplify the constraints and risks in the North and South shores of the Mediterranean. The challenges of increasing the effects of urban heat islands, air pollution and the scarcity of water resources are multiplying, especially in urban areas, contributing to a sharp deterioration in living conditions, particularly for the most vulnerable. **The construction sector** is particularly affected by these adaptation issues. However, solutions exist to improve thermal comfort in buildings: massive energy renovation measures, new bioclimatic construction, passive ventilation and shading measures, use of local bio-sourced materials, installation of heating and cooling networks, etc. These solutions can be combined with reflections on the future of buildings. These measures can be combined with more appropriate urban planning: vegetation, use of low albedo materials for construction, etc. These measures can help reduce energy consumption and the use of air conditioning, a real climate "time bomb". This

¹ Prévisions 2100 - scénario RCP 8.5 - MedECC (2020) Climate and Environmental Change in the Mediterranean Basin – Current Situation and Risks for the Future. First Mediterranean Assessment Report [Cramer, W., Guiot, J., Marini, K. (eds.)] Union for the Mediterranean, Plan Bleu, UNEP/MAP, Marseille, France, 632pp, ISBN 978-2-9577416-0-1, doi: [10.5281/zenodo.4768833](https://doi.org/10.5281/zenodo.4768833).

competition will help identify these more or less innovative measures at the territorial level.

Public stakeholders, private sector and NGOs are taking action and developing solutions to adapt the Mediterranean regions to the changing climate.

The actions being undertaken need to be placed in the spotlight with a view to encouraging other Mediterranean stakeholders to do likewise.

For this reason, the French Agency for ecological transition (ADEME), in partnership with Plan Bleu, the UN Environment Programme (UNEP) Global Alliance for Buildings and Construction (GlobalABC), meetMED project supported by Medener and RCREEE, and Resallience, these Awards focused on building sector to reward the most outstanding exemplary adaptation actions.

Who can enter?

This competition is targeting companies or members of the private sector, local authorities, national agencies, public universities and NGOs, who have implemented an adaptation action.

*It concerns the regions included within the **Mediterranean bioclimatic zone, i.e. part or all of the following countries:** Albania, Algeria, Bosnia-Herzegovina, Croatia, Cyprus, Egypt, France, Greece, Israel, Italy, Jordan, Lebanon, Libya, Macedonia, Malta, Montenegro, Morocco, Palestinian National Authority, Portugal, Slovenia, Spain, Syria, Tunisia, Turkey.*



What types of climate change adaptation action can be entered in this competition?

The actions must have been **implemented or be in progress** (projects that have not been launched will not be admissible) and present **measurable outcomes** in terms of adaptation to climate change.

Actions should cover **buildings, equipment, infrastructure and facilities** related to the construction sector. They can fall under different approaches and typologies defined by the international community²:

- "Grey" solutions: For example, we can mention urban planning actions aiming to improve summer thermal comfort or rainwater management, integrated coastal zone management actions, building adaptation actions (insulation, shading solutions, natural ventilation, bioclimatic design, etc), actions aiming to reinforce the robustness of networks and infrastructures to climatic events...
- "Green" solutions - Examples include: urban cooling actions based on ecosystems (soil, water, vegetation), development actions to promote ecological continuity, actions to control the demand for drinking water or to mobilise alternative resources, greening of roofs and facades, etc.
- Soft solutions: For example, we can mention: research programmes, territorial observation programmes, nudge practices/changes in working hours, "cold" audits, actions aimed at training/raising awareness/commitment of actors and decision-makers in the territories, incentive and/or regulatory actions, actions aimed at integrating climate change into public policies...

NB: Candidates are able to submit several applications files if they wish to do so.

² Adaptation actions are grouped by type in the European Commission Adaptation White Paper (SEC 2009; EEA Report no. 3/2013):

- "grey" infrastructural approaches, comprising physical or construction-based measures calling on engineering services to make buildings and infrastructure that are essential to economic and social wellbeing more resilient to extreme events;
- "green" structural approaches, which help build the resilience of ecosystems and, while striving to halt biodiversity loss and ecosystem damage and restore the water cycle, utilise the functions and services provided by ecosystems to obtain an adaptation solution that is more profitable and, in some cases, easier to implement than one adopting "grey" approaches alone;
- "Orange", more gentle, non-structural approaches, involving designing and implementing policies and procedures relating to land allocation, information dissemination and economic incentives aimed at reducing or preventing vulnerability.

The case studies proposed for the competition must relate to buildings that have been designed or renovated in a resilient manner to cope with one or more natural and climatic hazards: floods, drought, earthquakes, landslides, avalanches, forest fires, cyclones, storms, hailstorms, etc.

Type of building eligible:

- ✓ Any type of public or private building, residential, tertiary, commercial, industrial, cultural, health...
- ✓ Building located in an area exposed to at least one natural and climatic hazard, having, or not, suffered damage following the occurrence of one of these hazards.
- ✓ Building delivered or demonstrator already completed, with reception between 1 January 2005 and 31 December 2022.
- ✓ New construction, reconstruction, extension or global renovation, any other building (reversible renovation)

The buildings participating in the competition, as well as any elements mentioned in the case study must be able to be photographed and filmed on site in case of a winning entry.

What assessment criteria will be taken into account?

Application files will be assessed according to the following criteria:

- outcomes of the action in terms of adaptation to climate change
- exemplarity in implementing the adaptation action
- potential for replicating the adaptation action in other areas
- illustration of the 10 principles for effective adaptation proposed by the GlobalABC - <https://globalabc.org/resources/publications/adaptation-building-sector-climate-change-10-principles-effective-action>

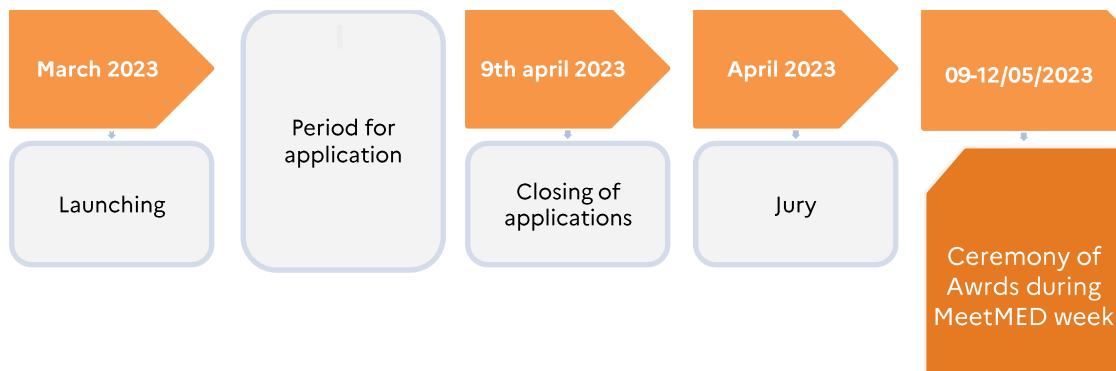
What are the benefits of entering the competition?

The awards ceremony will take place in **May 2023, during the Second Edition of the meetMED Weeks held in Marrakech (Morocco) from 9 to 12 May**. This event organised by MEDENER, RCREEE in collaboration with the Moroccan Agency for Energy Efficiency (AMEE) is gathering regional stakeholders in the Building sector.

The finalists (the 3 best applications) will receive a diploma and benefit from national and international exposure, thanks to widespread promotion by ADEME and its Mediterranean & International partners, in particular via:

- Support from the partners
- Invitations to an international workshop
- International promotion of your actions (press communication, a dedicated publication, etc.)

What are the key competition dates?



How to enter the competition?

1. Download the application form from Awards's website

- <https://www.medadapt-awards.com/en/enter-the-competition/>

2. Fill in the application file, which consists of the summary-sheet and the form

NB: Files must be completed in English or French.

3. Upload the completed application file, before 10 p.m. on Sunday April 09, 2023, (UTC-00:00) to:

- <https://www.medadapt-awards.com/en/enter-the-competition/>

4. Click on "send" to validate the submission of your application (a confirmation email will be automatically sent to you)

5. Short-listed candidates will be invited to attend the awards ceremony, which will take place in May 2023, during meetMED weeks (Marrakech - Morocco).

Additional information

➔ The call for applications, the application form and the competition rules can be downloaded free of charge from Awards's website:

- www.medadapt-awards.com

➔ Further information regarding the “Mediterranean Climate Change Adaptation Awards” may be obtained by email by contacting:

- email - contact@medadapt-awards.com
- contact form on website - www.medadapt-awards.com/en/contact-us/